

# *THE ALEMA*

Volume 1, Issue 1

## *Stand Up Against Poverty Rally*

STAND UP AGAINST POVERTY involved signing up prior to the event to participate. All participating students left class at 11:18 on Wednesday to the Flagpole. After Fr. Paul, our Campus Minister, led the 900 assembly to see and solve the needs of those living with poverty and injustice, Mr. F... based on the STAND UP AGAINST POVERTY pledge) and encouraged everyone to live POVERTY in their everyday lives and deeds as well as in national and international...

## *College Center News*

**Case Studies Night** on Wednesday, November 7th. This year Providence High School in Burbank will be hosting the event! This is a chance to serve as a member of a mock college admissions team that admits or denies four college applicants. You read the applications. You decide who gets in and who does not. Juniors and seniors (and their parents!) are invited to participate. See your counselor for more information. Sign ups for this event are coming soon.



**College Financial Aid Night** on Tuesday, December 11th from 7:00 – 9:00 p.m. All parents are invited to attend and learn about different forms of financial assistance and planning.

For more information or if you should have any questions, please call the counseling office.

## *Parent Association*

# ANIAN

November 2007

and receiving a yellow wristband to indicate participation. On Wednesday, October 17, 2007 walking in silence with disabled students in prayer encouraging all to participate. At the rally, our principal, spoke (his statement encouraged students to STAND UP AGAINST POVERTY - national awareness and action.

## ***SENIORS***

College catalogs, applications, scholarship information, and SAT & ACT testing information are now available at the college/career center. We are constantly receiving new information and students are encouraged to come in and browse to see what's new.

Representatives from colleges and universities will visit Alemany throughout the fall. All juniors and seniors can sign up at the counseling center to participate. Listed below are the November visits already scheduled (take note, however, that new colleges are added weekly!).

The deadline for all University of California (UC) and California State University (CSU) applications is Thursday, November 30th. No applications will be accepted after this date.

## **Bishop Alemany High School**



### Points of Interest:

- Stand Up Against Poverty Rally
- College Center News
- Parent Association News
- Thanksgiving Food Drive
- 30 Hour Food Fast
- Alemany Alumni Association News

### Parent Service Opportunities

- Baking is on going various dates-please call for dates
- Sewing if you have the talent is needed-please call
- Recycling Help is needed –please call
- Sat Nov.17 Academic Scrimmage 7:30am-1pm proctor
- Sun. Nov 18 Open House 11am-5pm various jobs
- Wed Jan. 16 Parent Meeting Hostess needed and baking
- Sat Jan 19 Alemany Amigos 9am-1:30pm Chaperones
- Sat Jan 26 Placement Test 7:45am-11:30pm Hostess
- Sun Jan. 27 Communion Breakfast 8am-1pm setup/cooks/ hostess/clean up
- Alumni Office – mailings daytime. These are just a few opportunities at this time.
- Athletic Department - can be contacted if you would like to help different sports with the snack bar

### **Alemany Golf Tournament:**

***Monday, April 14th at Braemar Country Club in Tarzana***

## ***Thanksgiving Food Drive***



160,000 people in the San Fernando Valley live below the federal poverty level. Most families below the poverty level are working at jobs that pay less than what is needed to meet the necessities of life-especially food.

We can help make a difference! Between Monday November 5 and Monday November 19 (date changed from November 13) we will begin our annual Thanksgiving food drive. Food collection bins will be in English classrooms, the Administration office and Campus Ministry. We are encouraging all members of the Alemany community to help provide a Thanksgiving meal and food for a week for nearby families living in poverty. Our goal is 55 families.

Items needed for the collection are listed on our website [www.alemany.org](http://www.alemany.org)

date.

**November dates to remember:**

Wed. 11/07 Case Studies Night @ Providence HS

Fri. 11/30 DEADLINE for UC and CSU applications!

**Websites to know:**

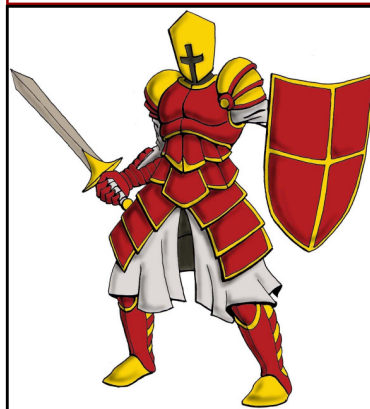
SAT & SAT Subject Test Registration  
[www.collegeboard.com](http://www.collegeboard.com)

CSU (California State University)  
[www.csumentor.edu](http://www.csumentor.edu)

UC (University of California) Application  
[www.ucop.edu/pathways](http://www.ucop.edu/pathways)

Financial Aid Information  
[www.fafsa.ed.gov](http://www.fafsa.ed.gov)  
[www.collegeboard.com](http://www.collegeboard.com)

- Exceptional Halloween Dance
- Alemany Students Helping In Our Community



## ***30 Hour Food Fast***

### ***Hungry with a Cause!***

Families and friends of Alemany students pledged over \$1250 to alleviate HUNGER in our world by supporting **79 students** and **4 faculty** who participated in a 30-Hour Food Fast (November 1st and 2nd), in solidarity with the 2 billion people in our world who live with hunger on a daily basis.

Special commendation to Sophomore Matt Klatte who had the most pledged support, and to Freshmen Juan Reballedo, Jessica Despard and Alexis Jackson who averaged \$100 in pledges. Seniors Lauren Litke, Kaycee Felton-Lui, Lindsey Bloom, and Kristine Zabala organized, publicized and really worked this activity. Mr. Bob Warren and Ms. Mary Wilson coordinated the Community Service activity with beginning and ending meals provided by Ms. Lori Brown and Parent Volunteers. \$950 will be sent to Catholic Relief Services for international food programs (see [foodfast.org](http://foodfast.org)) with the rest of the collected funds dedicated to addressing local hunger.

**From the alumni office and the desk of T.Browne:** I can't put my hand on the past and future of Bishop Alemany high school. Moving into the alumni office is a great opportunity to renew relationships that were an important part of my life. When I reach names of folks I've taught and coached I find myself

We need your help to expedite the renovation of the alumni data. Please visit the school website ([www.alemany.org](http://www.alemany.org)) and update your information.

Bishop Alemany High School hosted the 29th Annual Exceptional Halloween Dance. Exceptional guests are the mentally and physically disabled from the area. Many of our guests have been attending the dance for many years and our goal is to host this wonderful party.



The idea for this dance came from Nancy Graziano. She realized that her developmentally disabled daughter, who is now 29, could not attend parties at most centers play host to parties for the disabled. How greatly her sister anticipated parties, Ms. Graziano put together the dance to meet the needs of these special people. She pronounced the dance a success and the rest is twenty-nine years of his

The success of the Exceptional Halloween Dance is a community effort. The faculty and staff encourage the students to get involved and support the dance. We have sponsored the dance by donating money, gift cards, goods, and services. (Matthew '08) and Nestle for their generous donation of candy to last year's dance.

**If you would like information on this community service event, please contact the alumni office.**

Alema

**Bishop Alemany High School Student On A Mission To Save The World**  
**Kristal Brown**, a senior at Bishop Alemany High School in Mississippi, is on a mission to change that. For her Gold Award project - the highest honor that can be earned by a high school student - she is working to

## Alemanya Alumni Association

It is difficult to put into words how excited I am to be a part of the past, present and future. My time in the office and working with Mrs. Schnelldorfer will give me the opportunity to spend my time here. I have been updating the alumni database and have been stopping and wondering, "What the heck are they up to???"

If you are an alum or if you know an alum PLEASE visit the

## Exceptional Halloween Dance

We are having a Halloween Dance on October 30th in the Dining Hall. Our Ex-Students from the San Fernando, Santa Clarita, and San Gabriel Valleys. Many of our students work hard to plan, collect donations, promote, and

Ms. Nancy Graziano, the athletic director in the late 1970's, when she was a disabled sister, Marcia, had no Halloween party to attend. Although it was the holidays, no events were planned for Halloween. Knowing the love of the holidays and knowing how great her enjoyment was at being able to attend, she shared the Christian compassion of students at Alemany and the love of the holidays. She noted the idea of a dance, the students planned the festivities, and she shared the story.

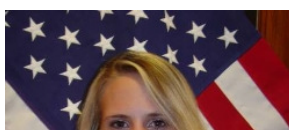
With the help of the students, the students donate candy, snacks, drinks, and prizes. They set up collection boxes in their rooms. Parents and businesses provide services. Special thanks go to the Stevenson Family for their help in last year's dance.

For more information or to attend, please contact Samantha Tan at [stan@alemany.org](mailto:stan@alemany.org).

## Many Students Helping In Our Community

### Pets

...on Hills and a lifelong Girl Scout, is hoping to see what can be earned in Girl Scouting - Kristal



has set out on a mission to provide special pet-sized oxygen masks for dogs and cats. All 114 of them.

"I picked this project because it is close to my heart," Kristal says. "I picked this project because it is close to my heart," Kristal says. them by donating these masks to fire stations."

In 2005, there were more than 40,000 animal deaths resulting from fires. Firefighters often go to great lengths to save pets suffering from smoke poisoning, sometimes even resorting to mouth-to-snout resuscitation.



***Bishop Alemany Senior's Eagle Scout*** Senior ***Zachary Cook*** completed the project that consisted of sanding and painting 35 bleachers throughout the student lunch area at Bishop Alemany High School and 14th Zachary, some of his fellow students participated in the project that took about a week. Replacing and painting an additional 23 benches. Each bench requires at least 100 volunteer hours.

**FOCUS ON LEARNING** is a process used to assess the quality of education at Bishop Alemany High School because it attests to Universities and colleges that students qualify for admission.

Bishop Alemany, through the auspices of the Archdiocese of Los Angeles, is a member of the **Western Catholic Educational Association (WCEA)** established by the **Association of Schools and Colleges (WASC)**.

In 2005, Bishop Alemany received an accreditation of six years with distinction and will consist of a one-day visit by a two-person WASC team of experts. Well Bishop Alemany is doing in regard to an **Action Plan for Improvement**.

At present the school's **FOL Action Plan Task Force** is working on a plan.

The Task Force needs parents, alumni and community members to help. Please contact [kmurphy@alemany.org](mailto:kmurphy@alemany.org) if you are able to help.

*For Further information go to the website. please click on 'WASC Information' under 'About Us', thank you.*

to every fire station in the city of Los Ange-

"I love pets and figured I could help a lot of

m house fires, compared to 4,000 human  
g from smoke inhalation or carbon monoxide  
on.



### ***Scout Project Repairs Student Lunch Benches***

e last of his requirements for the rank of Eagle Scout by oversee-  
g, repairing and painting the individual benches that are used  
t Bishop Alemany High School. Over the weekend of October 13th  
Scouts and Leaders, as well as Alemany students and parents  
a total of 173 man hours to complete. The project consisted of tear-  
acing them with new two-by-fours, and sanding, priming and re-  
agle Scout projects are designed to benefit the community and re-

## **Focus On Learning: Task Force**

of a school's educational program. **Accreditation** is important to  
nd Colleges that the school's programs are of such quality that its

angeles, belongs to two accrediting agencies. The first is the **West-**  
y the Bishops of California. The second is the **Western Associa-**

with a mid-term review. The review will take place in March 2008  
f educators from other schools. This committee will evaluate how  
**improvement** developed for the last WASC visit.

on writing a **Mid Term Report** in preparation for the review.

s who can give one hour of time on several Thursdays, meetings.

***the Bishop Alemany website,***

***then click on the link to the 'Focus On Learning Web page.***